

MyIntealth™

MyIntealth represents an important step in our organization's journey toward a more integrated system and improved customer experience. This new technology platform will provide users with streamlined access to services from Intealth® and its divisions, enhancing how individuals and organizations engage with us.

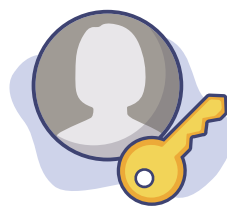
Introducing new functionality for those we serve



Centralized Access to Programs

MyIntealth eliminates the need to use multiple online applications to access different programs.

- Centralized environment for programs
- Single user ID and password for all programs



Single Applicant User Account

Applicants will establish a MyIntealth account once and use it to apply to all future programs.

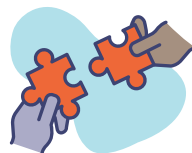
- Avoid duplicate entries when applying for new programs
- One place to manage your user profile, payments, and notifications for all programs



Better User Experience

A centralized platform is more efficient for users and offers a consistent experience across our programs. MyIntealth also will offer the convenience of completing more transactions online, eliminating many of our paper-based forms.

- Common look and feel across programs
- Easier to learn and use than multiple systems
- Online functionality replaces many paper-based forms, saving time and effort
- Integration with financial systems means credit card refunds are automated and faster



A Foundation for Growth

MyIntealth will replace dozens of aging systems with an integrated and modern platform. This will allow us to provide better service through future enhancements and expansion into new programs.

- Ease of enhancing our programs
- Support for new programs for users worldwide

Learn more at
MyIntealth.org



Intealth®
Advancing the Global Health Workforce